

Decisions and reflections on cancer screening: patients' perspectives from www.healthtalkonline.org

Sue Ziebland

Reader in Qualitative Health Research

Department of Primary Health Care Sciences

University of Oxford

What is Health Talk Online?

- Award winning multimedia websites
- Resources for patients and the public, carers, professionals in practice and training, policy makers
- Key findings from qualitative research studies published online, illustrated with video and audio clips from interviews on health experiences
- Collaboration between DIPEX charity and the Health Experiences Research group in University of Oxford
- International collaboration including Japan, Australia, Korea, Spain, Germany, Israel, Canada, Netherlands

Search...

Search

See all conditions

Cancer

Nerves & brain

Mental health

Dying & bereavement

Chronic health issues

Intensive care

Heart disease

Bones & joints

Pregnancy & children

Carers

Autism

Medical research

Later life

Young people

Women's health

Improving health care

"True stories are...nutritious and sustaining. They feed the mind with information and the heart with hope and strength.."

Philip Pullman

People's stories: see, hear and read their experiences...

Healthtalkonline is the award-winning website of the DIPEx charity. Healthtalkonline and its sister website, Youthhealthtalk, let you share in more than 2,000 people's experiences of over 60 health-related conditions and illnesses. You can watch video or listen to audio clips of the interviews, read about people's experiences if you prefer and find reliable information about specific conditions, treatment choices and support.



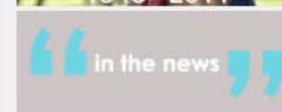
The information on Healthtalkonline is based on qualitative research into health experiences, led by experts at the University of Oxford. These personal stories of health and illness will enable patients, families, carers and healthcare professionals to benefit from the experiences of others.

For more information on a particular condition, please click on one of the links to the left.

If you'd like to help spread the word about Healthtalkonline, please download and print our new poster ([click here](#)) and take it to your local GP surgery or hospital.

How to use this site...

Like 540



Website design & graphics by Spinach Design Ltd



Conditions

Cancer

Bowel screening

Breast Cancer

Breast Screening

Cervical abnormalities: CIN3 and CGIN

Cervical Cancer

Cervical Screening

Colorectal Cancer

Ductal Carcinoma in Situ (DCIS)

Leukaemia

Lung Cancer

Lymphoma

Ovarian Cancer

Pancreatic Cancer

Prostate Cancer

Testicular Cancer

The PSA test for prostate cancer

Search...

Search

Cancer

Welcome. Healthtalkonline an award-winning charity website, lets you share in other people's experiences of health and illness. This information is based on qualitative research into patient experiences led by experts at the University of Oxford.

There are many different types of cancer. We have interviewed a wide range of people with personal experience of cancer, so that you can share in their stories. All of the topics covered in this section are listed below and in the menu on the left.

*You may also be interested in **Teenage cancer**, which can be found on youthhealthtalk.org*

Bowel Screening

Bowel screening can detect bowel cancer at an early stage. We interviewed 44 people about their experiences of bowel screening.

Breast Cancer

Breast cancer is the most common cancer in women, and occurs in rare cases in men. We interviewed 47 people about their experiences of breast cancer.

Breast Screening

Breast screening can detect breast cancer at a very early stage. We interviewed 48 women about their experiences of breast screening.

Cervical abnormalities: CIN3 and CGIN

Every year many women are diagnosed with abnormal cervical cells. CIN (Cervical Intra-epithelial Neoplasia) means abnormal cells found on the surface of the cervix. CGIN (Cervical Glandular Intra-epithelial Neoplasia) means abnormal cells found on the glandular tissue in the cervix. CIN 3 indicates severe changes (not cancer) affecting the full thickness of the surface layer of the cervix.

Cervical Cancer

Cervical cancer develops from cells lining the cervix. We interviewed 25 women about their experiences of this condition

Cervical Screening

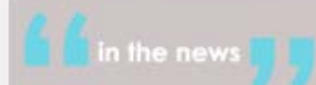
Cervical screening aims to detect early abnormalities that may lead to cancer of the cervix. We interviewed 37 women about their experiences of cervical screening.

Colorectal Cancer

Bowel, or colorectal, cancer occurs in the colon or rectum. We interviewed 39 people about their experiences of bowel cancer.



Introduction by
Jenni Murray



Useful Links

National Health Information
Cancer organisations

Mail to a friend

Your name

Your friend's name

Your friends e-mail address

Send

Tell us your story

You can help support others
by [sharing your own](#)
[experiences](#) through
[healthtalkonline](#).

Screening for cervical cancer



Screening for cervical cancer



Bowel cancer screening



Breast cancer screening



PSA testing



Health Experiences Research Group

papers on cancer screening

- Prinjha, S. Evans, J. Ziebland, S. McPherson, A. A mastectomy for something that wasn't even truly invasive cancer': Women's understandings of having a mastectomy for screen-detected DCIS, a qualitative study. *Journal of Medical Screening* 2011; 18: 34-40
- Chapple, A. Ziebland, S. Hewitson, P. McPherson, A. What affects the uptake of screening for bowel cancer using the faecal occult blood test (FOBT): a qualitative study. *Soc Sci Med* 2008; 66:2425-2435
- Prinjha S, Evans J, McPherson A. Women's information needs about ductal carcinoma in situ before mammographic screening and after diagnosis: a qualitative study. *Journal of Medical Screening*. 2006, Vol 13, No 3, p110-114.
- Chapple A, Ziebland S, Herxheimer A, Shepperd S, Miller R, McPherson A. Why men with prostate cancer want wider access to Prostate Specific Antigen (PSA) testing: a qualitative study. *British Medical Journal* 2002; 325: 737-9.
- Chapple A, Ziebland S, McPherson A, Hewitson P. Why men in the United Kingdom still want the Prostate Specific Antigen (PSA) Test. *Qual Health Res* 2008;18(1):56-64.

Discussion

- Qualitative research can help identify public perspectives and understandings on screening
- Reasons why people do and do not take part (or take part again) in screening can be complex
- Personal experiences (eg of hard treatment choices or relief that problem caught early) and celebrity illness (eg Jade Goody, Kylie Minogue) are often cited
- Decision making: statistics alone can be hard to interpret , hearing how others have made, and reflected on, their decisions may help avoid regret
- The HTO sites on experiences of cancer screening intended to improve understanding of people's perspectives on screening

Acknowledgements and Contacts

- Thank you to all those who were interviewed for the HTO projects and to The UK National Screening Committee for funding the research and development of the screening sections on the website.
- Sue.ziebland@phc.ox.ac.uk (Research Director)
Phone +44 (0)1865 289328
- www.healthtalkonline.org
- www.youthhealthtalk.org

About the research methods

- Stand alone qualitative interview studies (40-50 per collection)
- Narrative methods – unstructured and semi structured sections
- Diverse sample - interviews throughout UK
- Thematic analysis – approx 25 topics and 300 video audio and written clips each collection
- Research findings disseminated via HTO and in peer reviewed papers
 - Ziebland S, McPherson A. Making Sense of Qualitative Data Analysis with illustrations from the [DIPEX](#) project. *Medical Education* 2006; 405-414